

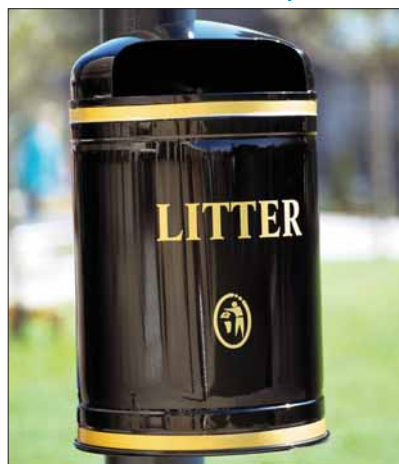
Outdoor Post and Wall Mounted Litter and Waste Bins

Our post and wall mounted bins are built to the same exacting standards as our free standing litter bins. All are treated with a rust resistant primer prior to powder coating.

Colours

- Standard colours are Black=BK, Cobalt Blue=CB, Forest Green=FG and Black Matt=BM please add suffix to end of codes
- Other colours available on request

Victoria Dome Top



- For the toughest of areas
- Made from 1.6mm mild steel and fitted with a heavy duty slam lock
- The bin empties from the base so there is no need for a liner
- Capacity: 40 litres
- Size: 610mm high x 355mm dia.

description	Code+Suffix	Price
Post Mounted	WPTI080	£150.17
Wall Mounted	WPTI082	£160.67

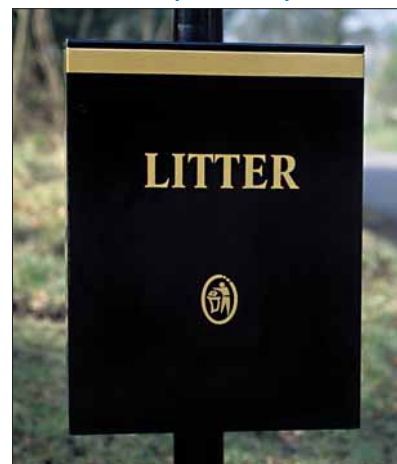
Victoria Open Top



- Manufactured in 0.7mm mild steel
- Supplied with a galvanised liner
- Capacity: 40 litres
- Size: 480mm high x 355mm dia.

description	Code+Suffix	Price
Post Mounted	WPTI079	£115.67
Wall Mounted	WPTI081	£129.17

Edward Open Top



- Supplied with a galvanised liner
- If used without a liner it will take a 430 x 660 x 690mm sack
- Capacity: 40 litres
- Size: 525 High x 400 Width x 210mm Deep

description	Code+Suffix	Price
Post Mounted	WPTI067	£108.17
Wall Mounted	WPTI067W	£108.17

Albert Dome Top Bin

- An easy to use and install 50 litre bin suitable for post or wall mounting
- Hard wearing and weather proof suitable for internal and external use
- Size: 811 High x Width 480 x 357mm Deep



description	Code	Price
Albert Bin	WPTI015	£68.33

George Street Top Bin

- Manufactured in 0.6mm mild steel
- Fitted with a slam lock and galvanised liner
- Capacity: 30 litres
- Size: 620 High x Width 360 x 240mm Deep



Base

description	Code	Price
Post Mounted	WPTI089	£193.67
Wall Mounted	WPTI090	£202.67



Posts

- Galvanised posts for either concreting in or bolting to the ground
- Size: 1500 high x 75mm dia.

description	Code	Price
Concreting in	WPTI702	£65.00

- Size: 1400 high x 75mm dia.

description	Code	Price
Bolting down	WPTI007773	£69.20